

Log Analytics

Overview

The Sumo Logic App for Artifactory automatically creates an account with Sumo Logic and sends it logs for analysis. Once an account is created through Artifactory, you can connect several instances to that same account. The Sumo Logic data analytics platform will, in turn, display pre-enabled dashboards which can be customized as needed. This enables you to access Sumo Logic's premium operational analytics directly from Artifactory, letting you index and analyze both structured metrics data and unstructured log data together in real time. The Sumo Logic App for Artifactory provides you with a customizable dashboard showing a variety of analytics such as:

- Traffic by geo-location
- Active IPs
- Most active repositories
- Top referred files
- Requests by status codes
- Denied login attempts
- and much more.

For more details about the different analytics that the Sumo Logic App for Artifactory can provide, please visit the [Sumo Logic website](#).

Page Contents

- [Overview](#)
- [Configuration](#)
 - [Credentials](#)
 - [Creating a New Account](#)
 - [Traffic Log](#)
 - [Connection Established](#)
- [Webinar](#)

Configuration

The Log Analytics Configuration can be found in the **Admin** module under **Advanced | Log Analytics**.

Log Analytics Configuration

Sumo Logic Integration

The JFrog Artifactory / Sumo Logic integration gives you a centralized overview of your artifact repositories with the ability to drill down and quickly identify recent changes, check application dependencies and identify potential issues. Through dashboards, queries and searches that are pre-enabled out-of-the-box, Sumo Logic allows you to analyze all data that Artifactory generates. For a complete overview, [click here](#).



Artifactory Dashboard Settings

Enable

Create New Connection
Create an Artifactory dashboard

Use Existing Client ID and Secret
Connect this instance to an existing Artifactory dashboard

Client ID *



Secret *



Proxy

Access Dashboard

Get started by setting the **Enable** checkbox.

Continue by obtaining your Sumo Logic credentials as described in the next section.

Credentials

To access the Sumo Logic Artifactory dashboard, you need a Client ID and Secret.

Creating a New Account

If this is the first time you are using the Sumo Logic App for Artifactory you need to create an account to obtain your login credentials. Select **Create New Connection**, and click "Access Dashboard".

Artifactory will connect you to the Sumo Logic App for Artifactory. Your user name will automatically be taken as the email from your Artifactory account.

sumologic®

Get free access to your dashboards

North America

I agree to the [Service License Agreement](#)

Access Dashboard

Select your region, agree to the **Service License Agreement** and click "Access Dashboard".



Region

For best performance, make sure to select the region that is geographically closest to your Artifactory instance.



Trial account is free for 30 days

The account created through this integration with Artifactory is a 30-day free trial account. To continue using the integration through this account beyond 30 days, you need to access your account on Sumo Logic and upgrade it to a paid account.

Traffic Log

The traffic log provides information about download and upload events from Artifactory and must be enabled for Artifactory to send the download and upload events to your Sumo Logic dashboard.

The traffic.log is disabled by default and must be manually enabled.

To activate the traffic.log file, add the following parameter to your `$ARTIFACTORY_HOME/etc/artifactory.system.properties` file :

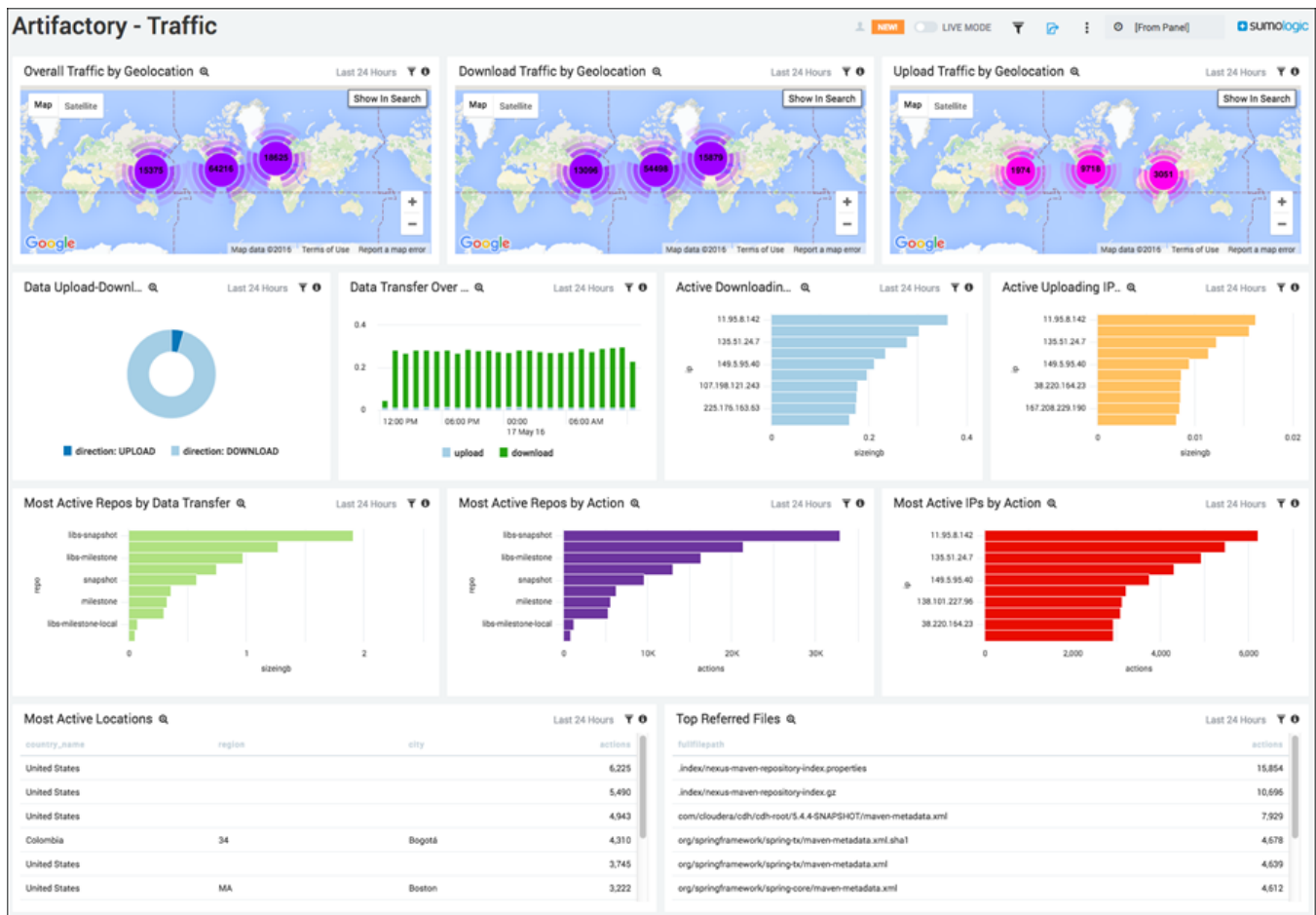
```
artifactory.traffic.collectionActive=true
```

For this change to take effect so you can start collecting site traffic information, you will need to restart your system.

Connection Established

Once the connection is established, the Sumo Logic App will start analyzing your log files and populating the dashboard. This process may take several minutes to complete.

Out-of-the-box, the Sumo Logic App comes pre-configured with several dashboards. You can modify these and add to them as needed.




For details on how to work with and modify your dashboard, please refer to the [Sumo Logic documentation](#).

The Log Analytics screen in Artifactory will reflect the connected status showing the Client ID and Secret needed to log into your account.

Log Analytics Configuration

Sumo Logic Integration


The JFrog Artifactory / Sumo Logic integration gives you a centralized overview of your artifact repositories with the ability to drill down and quickly identify recent changes, check application dependencies and identify potential issues. Through dashboards, queries and searches that are pre-enabled out-of-the-box, Sumo Logic allows you to analyze all data that Artifactory generates. For a complete overview, [click here](#).




Artifactory Dashboard Settings

- Enable
- Create New Connection
Create an Artifactory dashboard
- Use Existing Client ID and Secret
Connect this instance to an existing Artifactory dashboard

Client ID *



Secret *



Proxy

Webinar

For more details on how to set up and use Artifactory's integration with Sumo Logic, please watch the webinar below.