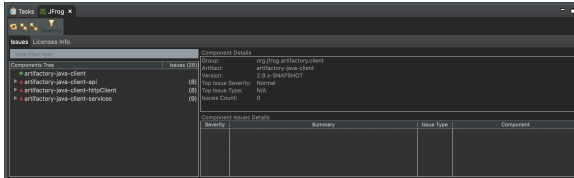


JFrog Eclipse IDE Plugin

Overview

The JFrog Eclipse plugin adds JFrog Xray scanning of Maven, Gradle, and npm project dependencies to your Eclipse IDE. It allows developers to view panels displaying vulnerability information about the components and their dependencies directly in their Eclipse IDE. With this information, a developer can make an informed decision on whether to use a component or not before it gets entrenched into the organization's product.

The plugin filter allows you view the scanned results according to issues or licenses.



Source Code

The JFrog Eclipse Plugin code is [available on Github](#).

Page contents

- [Overview](#)
 - [Source Code](#)
- [Installation and Setup](#)
 - [Prerequisites](#)
 - [Installing from Eclipse Marketplace with drag and drop](#)
 - [Installing Plugin from within Eclipse](#)
 - [Installing the Plugin from Disk](#)
 - [Configuring the Plugin to Connect to JFrog Xray](#)
- [Using the Plugin](#)
 - [Open JFrog tab](#)
 - [Scanning and Viewing the Results](#)
 - [Filtering Xray Scanned Results](#)
- [Release Notes](#)
- [Reporting Issues](#)

Installation and Setup

To install and work with the plugin:

1. Install the JFrog plugin, using one of these options:
 - [Eclipse Marketplace](#) with drag and drop.
 - [From within Eclipse](#).
 - [From Disk](#).
2. If JFrog Xray is behind an HTTP proxy, configure the proxy settings as described [here](#). This is supported since version 1.1.0 of the JFrog Eclipse Plugin.
3. [Configure the plugin to connect to JFrog Xray](#).
4. [Scan and view the results](#).
5. [Filter Xray Scanned Results](#).

Prerequisites

- Eclipse IDE version Photon and above.
- JFrog Xray version 1.7.2.3 and above.

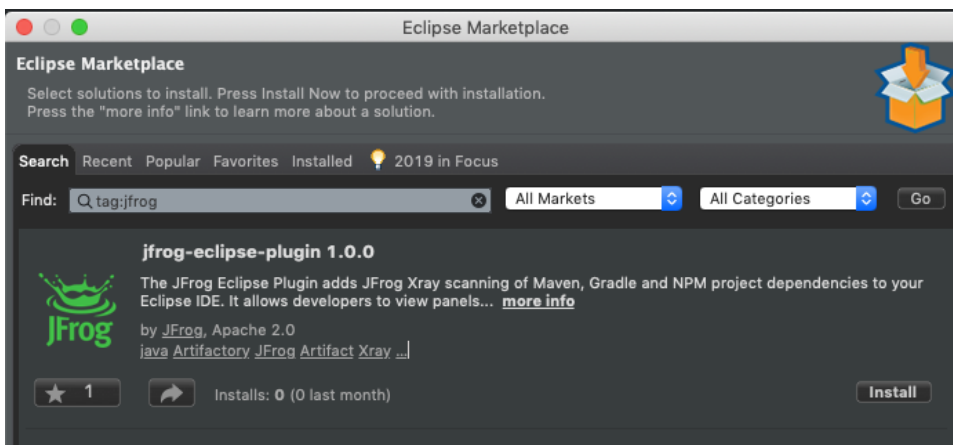
Installing from Eclipse Marketplace with drag and drop

1. Go to [Eclipse Marketplace](#).
2. Drag the install button to your Eclipse window.

Installing Plugin from within Eclipse

1. Go to [Help | Eclipse Marketplace](#), click **Search** and search for **tag:jfrog**.

2. Once the plugin is found, click **Install**.



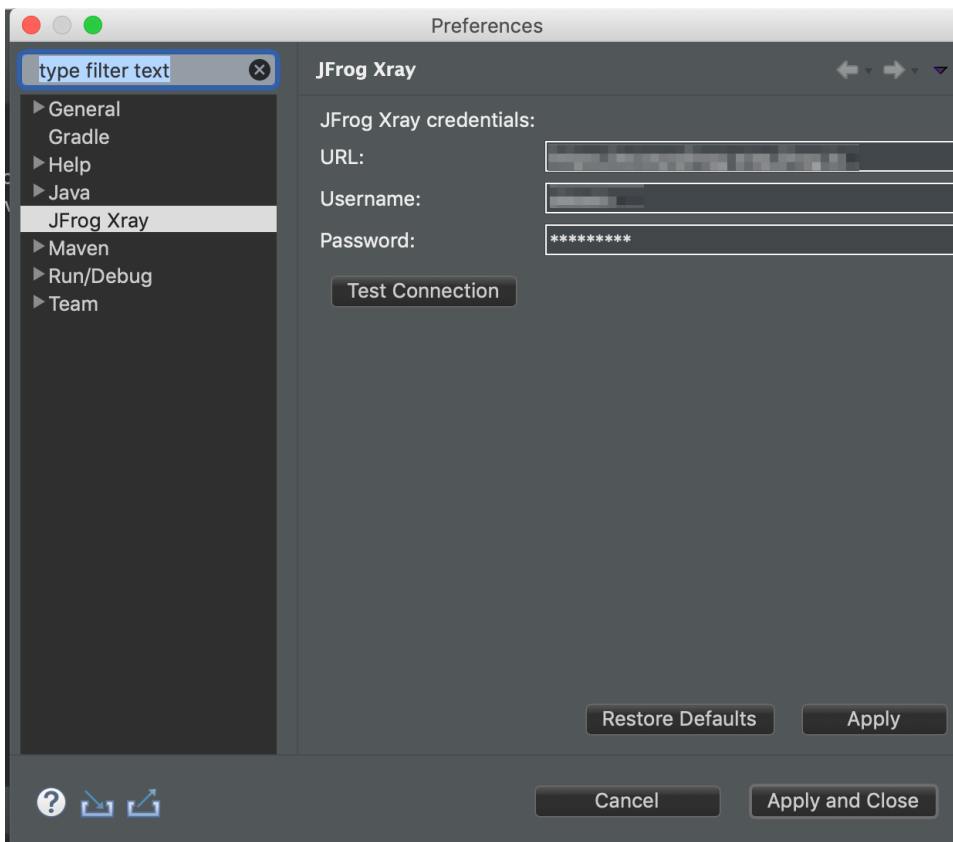
Installing the Plugin from Disk

1. Download the plugin zip from [here](#).
2. Go to **Help | Install New Software**, click **Add** and then click **Archive**.
3. Choose the plugin zip file you downloaded and click **Add**.
4. Click **Next**.

Configuring the Plugin to Connect to JFrog Xray

Once the plugin is successfully installed, connect the plugin to your instance of JFrog Xray.

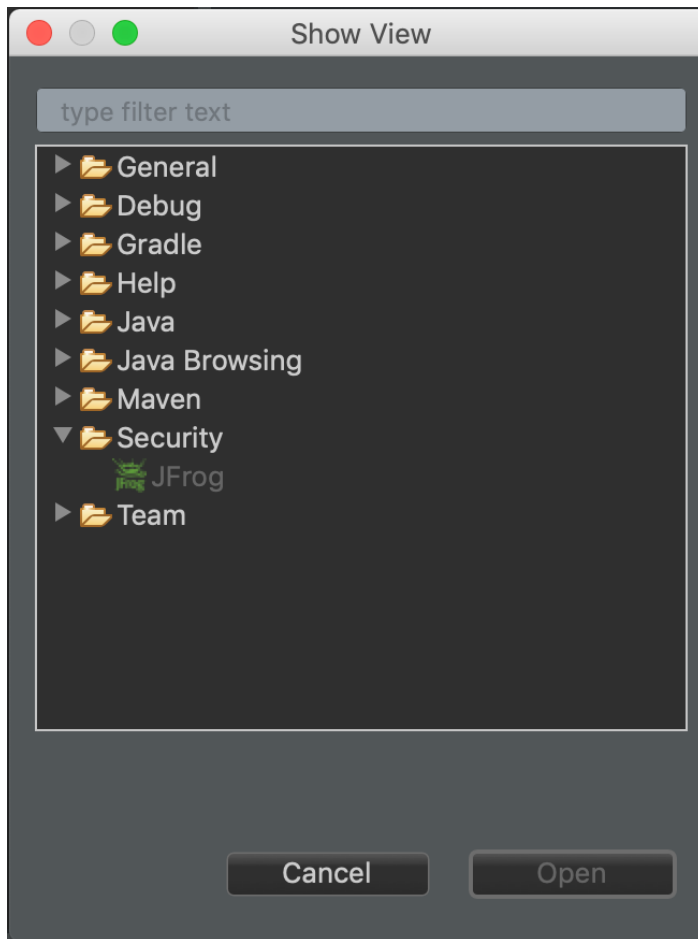
1. Go to **Eclipse (Preferences)**, click **JFrog Xray**.
2. Set your JFrog Xray URL and login credentials.
3. Test your connection to Xray using the **Test Connection** button.



Using the Plugin

Open JFrog tab

To open the plugin tab click on **Window | Show View | Other | Security | JFrog**.



Scanning and Viewing the Results

JFrog Xray automatically performs a scan when the plugin first loaded on startup.

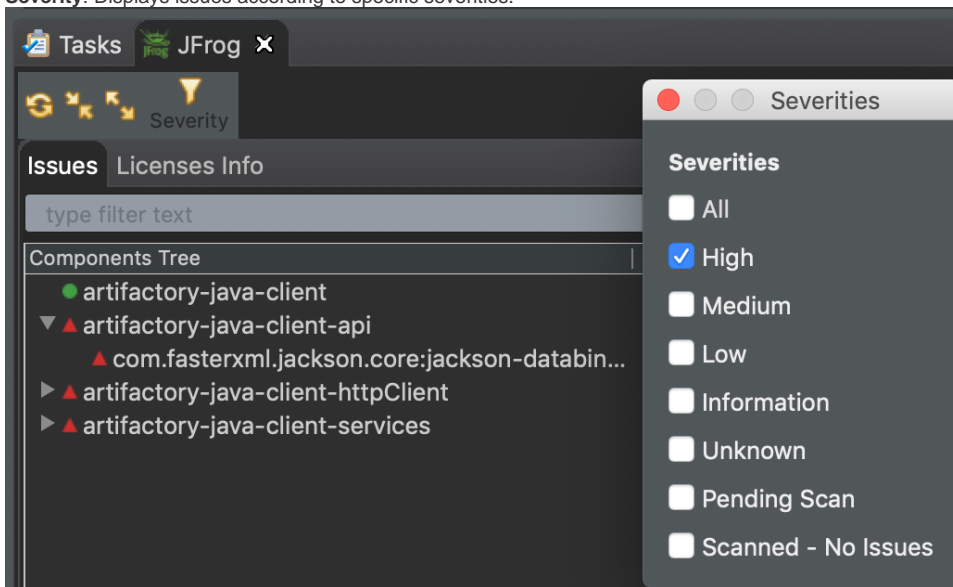
To manually invoke a scan:

1. Click Refresh in the JFrog plugin.
2. View the scanned results in the plugin.

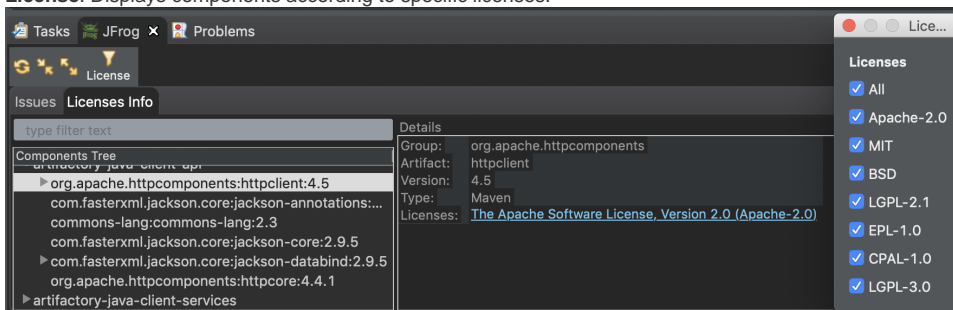
Filtering Xray Scanned Results

The JFrog plugin provides the following filter to narrow down the scanned results to view exactly what you need:

- **Severity:** Displays issues according to specific severities.



- **License:** Displays components according to specific licenses.



Release Notes

The release notes are [available on Bintray](#)

Reporting Issues

Please report issues by opening an issue on [Github](#).